

Welcome to SMOOTHSKIN BARE

Congratulations!

You've opened up a world of unparalleled beauty, smoothness and convenience. The days of waxing woes are officially behind you! With your new SMOOTHSKIN BARE Intense Pulsed Light (IPL) hair removal system you can look forward to silky smooth skin that lasts so long you'll have forgotten all about stubbly legs and prickly underarms.

Wave goodbye to wax strips - SMOOTHSKIN is here to stay!

Come and join in the conversation at the beauty room 'support programme' www.smoothskin.com where you can swap tips and get expert advice throughout your treatment.

CONTENTS

1.1	WARNINGS	6	4.5	SWITCHING OFF	24
1.2	PRECAUTIONS	9	5.0	AFTERCARE	25
1.3	EYE SAFETY	10	5.1	POSSIBLE SIDE EFFECTS	25
2.0	INTRODUCTION	12	5.2	SIDE EFFECT TABLE	26
2.1	YOUR SMOOTHSKIN	13	5.3	CLEANING, MAINTENANCE AND STORAGE	28
3.0	HOW IT WORKS	14	5.4	TROUBLESHOOTING	30
3.1	HOW DOES IPL WORK?	15	6.0	INFORMATION	32
3.2	WHAT TO EXPECT	15	6.1	TECHNICAL SPECIFICATIONS	33
4.0	HOW TO USE	18	6.2	DISPOSAL (END OF LIFE)	34
4.1	GETTING STARTED	19	6.3	WARRANTY	34
4.2	FEATURES	20			
4.3	TREATMENT	21			
4.4	TREATMENT METHOD - STAMP OR GLIDE	23			

1.1 WARNINGS

DO NOT USE SMOOTHSKIN BARE if you have very dark skin (see Skin Tone Chart below). Very dark skin may absorb too much light energy, and injure (e.g. burn, discolour or scar) your skin.



DO NOT USE SMOOTHSKIN BARE if your skin has been artificially or naturally tanned recently. Your skin may be extra sensitive following sun exposure and particularly susceptible to side effects of IPL treatment (e.g., burn, blister, discolour or scar your skin). Also, avoid unprotected exposure to direct sunlight after your SMOOTHSKIN BARE treatment. Your skin may be extra sensitive following IPL treatment and particularly susceptible to sunburn. Use sunscreen (SPF 15 or greater) or cover the skin.

DO NOT USE SMOOTHSKIN BARE directly on the nipples, genitals or around the anus. These areas may have a darker skin colour and/or greater hair density. Using the device in these areas

may cause discomfort/pain or injure (burn, discolour or scar) your skin.

DO NOT USE SMOOTHSKIN BARE if you have a history of skin cancer or pre-cancerous lesions (e.g. nevi or a large number of moles).

DO NOT USE SMOOTHSKIN BARE if you have any of the following, as SMOOTHSKIN BARE may injure your skin or make existing conditions worse. You may experience side effects such as burns, blisters and skin colour changes (hyper- or hypo-pigmentation) or scarring:

- Dark brown or black spots such as birthmarks, moles or warts in the area you wish to treat.
- Chronic skin disease (e.g. psoriasis or vitiligo) or damaged skin (e.g. sunburn, cuts, open wounds or active infections) in the areas you wish to treat.
- Varicose veins in the area you wish to treat.
- Tattoos or permanent makeup on the area you wish to treat.

- If you have a known sensitivity to sunlight (photosensitivity) or are taking medication that makes the skin more sensitive and causes photosensitivity, e.g. Retin A, Accutane and/or other topical retinoids.

If you are taking a medical product, always check the instruction leaflet, to see if photosensitivity is listed as a side effect. If you are still unsure about using SMOOTHSKIN BARE please seek medical advice. A list of medicines that cause photosensitivity can be found on the SMOOTHSKIN website

www.smoothskin.com/support

DO NOT USE SMOOTHSKIN BARE if you have had a skin peel treatment on the area you wish to treat.

DO NOT USE SMOOTHSKIN BARE if you are pregnant or lactating, as this device has not been tested with these individuals.

SMOOTHSKIN BARE is not intended for use by persons with reduced physical, sensory or mental capabilities, unless they have been given supervision or instruction concerning safe and

Glass Filter



proper use of the device by a person responsible for their safety.

SMOOTHSKIN BARE should be kept out of the reach of children under 16 years of age. Children should not use, play with, maintain or clean the device.

The SMOOTHSKIN BARE Glass Filter is a critical component that will get hot during use. **DO NOT** touch the Filter during or directly after use. Regularly inspect the Filter for damage. **DO NOT** use SMOOTHSKIN BARE if the Filter is cracked or missing.

1.2 PRECAUTIONS

SMOOTHSKIN BARE is not recommended for use on red, grey or very light hair as it is not effective on these hair colours.

Electrical and Fire Safety

As with any electrical device, certain precautions must be taken in order to ensure your safety.

Danger

DO NOT USE if SMOOTHSKIN BARE is damaged; for example, cracked handset, cable damage (internal wires visible), cracked or broken glass on the handset, etc. Internal parts contain electric charges that are hazardous.

DO NOT USE near bathtubs, showers, basins or other vessels containing water. If SMOOTHSKIN BARE becomes wet, it should not be used. DO NOT use if the device has been exposed to water.

NEVER try to open the SMOOTHSKIN BARE, as this may expose you to dangerous electrical components and to pulsed light energy.

DO NOT USE if the handset becomes uncomfortably hot to touch. This may indicate that the SMOOTHSKIN BARE is damaged.

1.3 EYE SAFETY

SMOOTHSKIN BARE emits flashes of Intense Pulsed Light. Direct exposure is potentially harmful to your eyes. Take care to follow the safety precautions below.

The handset can only be activated (flashed) if the skin tone sensor detects a valid skin tone reading. However:

DO NOT look directly into the treatment window of the handset when the system has electrical power and is switched on.

DO NOT attempt to activate (flash) the system towards the eye.

ONLY attempt to activate (flash) the system when the front of the handset is in good contact with the area you wish to treat.

We recommend you look away from the handset when firing onto your skin.

DO NOT treat areas around the eye (eyebrows or eyelashes).

SMOOTHSKIN BARE can be used to treat the upper lip, chin, cheek, jawline and neck.

DO NOT attempt to activate (flash) SMOOTHSKIN BARE onto any surface other than skin.

SMOOTHSKIN BARE is a single user device; it is not gender specific so it is suitable for male use.

SMOOTHSKIN BARE is not recommended for use on the male beard as results may be permanent.

2.0

INTRODUCTION

2.1 YOUR SMOOTHSKIN

She's a beauty!

SMOOTHSKIN BARE is powered by Intense Pulsed Light derived from professional IPL technology. This means when it comes to hair removal, nothing else comes close.



3.0

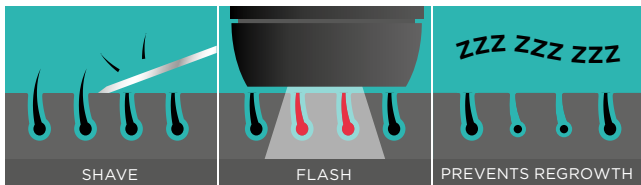
HOW IT WORKS

3.1 HOW DOES IPL WORK?

SMOOTHSKIN BARE is designed to help break the hair cycle and prevent regrowth. Light energy is transferred through the skin's surface and is absorbed by melanin present in the hair shaft. That light energy is converted to heat energy (below the surface of the skin), which stops the pesky hairs from growing back. Now you can look forward to seeing the treated hairs naturally fall out over the course of a few days to 1-2 weeks.

3.2 WHAT TO EXPECT

Interesting fact! Hair grows in 3 distinct and consecutive phases, and not all hairs are in the same phase at any one time. Because the IPL treatment is only effective in one particular phase (the Anagen 'growth phase' - since you ask), this is why you should follow your treatment regime until you see the desired results. By following the recommended regime, you're likely to zap any hairs you missed in previous treatments. Simple science!



The Treatment Regime

First let's talk about what NOT to expect. As for ALL home-use IPL or laser treatments (don't believe anyone who would tell you otherwise), one treatment won't last forever. You will need to keep treating the hairs every once in a while to avoid hair growth starting up again; but the great thing about SMOOTHSKIN BARE is that it will prevent hair regrowth as long as you keep treating regularly, so if you keep it up, you will never have to experience stubbly legs or underarms again. Hoorah!

To get the most out of your SMOOTHSKIN BARE, you should use it every week to ensure all hair follicles are treated.

In the first few weeks following the initial treatments, you will still see some hairs growing. Relax, these will likely be the hairs that were not treated in their growth phase (when IPL is most effective) so be sure to keep up with the treatments!

Within 4 weeks, you should be seeing a reduction in hair regrowth. Doesn't it feel fantastic? There will still be some hairs that need treating as you need to catch each hair in the right phase, but don't worry, things will only get better from here on in - so keep it up!

Side Effects

You shouldn't expect to see any significant side effects from the treatments. If you do notice anything out of the ordinary, just flick to section **5.2** for a bit more information.

Keeping Continuously Smooth

Of course, everyone's length of treatment is different (because we all have different skin, hair, lifestyle... even genetics play a role!) so from now on it's mostly up to you to define what is the right regime for you.

The secret to staying silky smooth is to keep at it and stick to your treatment regime. With regular use, you will see fewer and fewer hairs growing back. These hairs should also be finer, lighter in colour and grow more slowly. As time goes on, you will be able to completely replace your shaving routine.

Visit the SMOOTHSKIN website (www.smoothskin.com) for further advice and for helpful tips on how to use and get the best out of your SMOOTHSKIN BARE.

4.0

HOW TO USE

4.1 GETTING STARTED

1. Before using SMOOTHSKIN BARE, prepare the area to be treated by making sure it is shaved (making sure to remove all visible hair prior to every treatment), cleaned and dried. Any hairs remaining above the surface of the skin may damage the front of your device and could cause an adverse reaction.

Don't wax, epilate or pluck the hair in the treatment area, as this will remove the hair shaft that absorbs the light energy during treatment.

Remember, don't use any gels or creams with this device!

Whoa there! One step at a time...

Before your first treatment on each new body area, test your skin (in that area) for a reaction to SMOOTHSKIN BARE.

The Patch Test area should be approximately 3cm x 2cm (equivalent to 2 flashes side by side).

1. Follow the instructions in the 'Getting Started' section to begin as usual.
2. Treat the area.
3. Wait 24 hours.
4. If there's no reaction after 24 hours, you're good to go! The 'patch tested area' should NOT be re-treated for at least 1 week.

2. Power on the device.

Plug the power supply in using the cable provided. The skin tone sensor on the front of the handset will illuminate blue and the fan will start up.

4.2 FEATURES

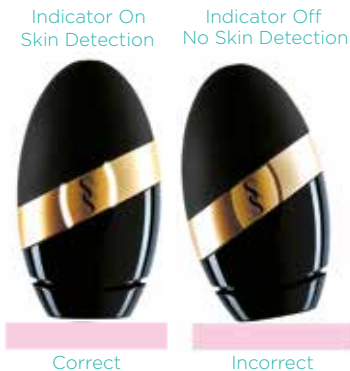
Skin Tone Sensor

SMOOTHSKIN BARE has a unique, sophisticated skin tone sensor. During a treatment, the sensor is continuously active, searching for a **valid** skin tone.



If the skin tone sensor does not detect a valid skin tone, then the handset cannot be activated.

Make sure the handset is placed flat against your skin, as it will only detect the **correct** Skin Tone when pressed against the skin.

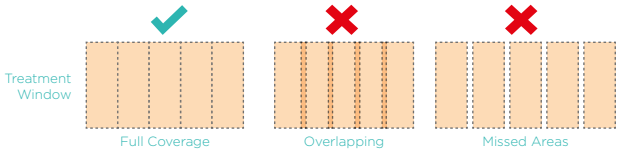


4.3 TREATMENT

- Press the handset firmly against the area to be treated. The indicators around the activation button will illuminate WHITE when the device is ready to flash.
- Press the activation button. The device will flash, and you will feel a warm sensation.
- Move the handset to the next area to be treated and go again!

Ensure that the ENTIRE AREA receives treatment, and treat any stubborn areas (such as underarms) with multiple passes (running your device over the same area a maximum of 3 times).

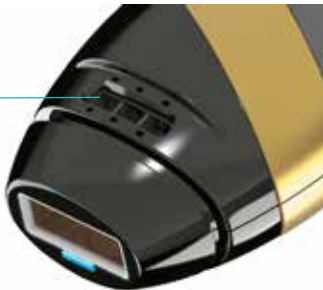
Treatment Window



Make sure not to cover the vents on the device whilst treating, as this can lead to the device overheating.

SMOOTHSKIN BARE is an extremely fast and powerful device, allowing you to complete a whole body treatment in under 10 minutes.

Vents



4.4 TREATMENT METHOD - STAMP OR GLIDE

There are two recommended methods for treatment - 'Stamp' or 'Glide.'

For whichever method you choose, the handset must be moved between flashes to ensure the area is treated evenly and no bits are missed.

The device needs to recharge between flashes. This will take about half a second.

Stamp Method

Best for small areas such as the underarm and face. Place the handset on the skin, press and release the activation button. Remove from the skin before carefully re-applying to the next treatment area.

Glide Method

This is best for larger areas such as legs. Place the handset on the skin, press and hold down the activation button, then glide the handset along the skin between flashes. Try to move the handset at a steady speed that gives full coverage without overlap or missed areas.

4.5 SWITCHING OFF

When you've finished your treatment, SMOOTHSKIN BARE should be unplugged from the electrical outlet.

Refer to section **5.3** for details of how best to look after SMOOTHSKIN BARE.

5.0

AFTERCARE

5.1 POSSIBLE SIDE EFFECTS

SMOOTHSKIN BARE is a powerful device. Some people may experience slight discomfort (e.g. heat or redness of the skin) during use - this is normal. This type of reaction usually disappears within 24 hours.

Side effects or reactions are usually immediate or appear within 24 hours.

If you are concerned, stop using SMOOTHSKIN BARE and please phone the SMOOTHSKIN Helpline on **+44 (0) 844 800 1156**.

5.2 SIDE EFFECT TABLE

SIDE EFFECT	HOW TO ASSESS & REACT
<u>Mild</u> pain / discomfort in the area being treated.	This is expected and is normal for all IPL treatments. You can keep on using the device as instructed, and the pain should diminish with continued use.
Warm feeling or tingling sensations during treatment, which typically disappear after a few seconds to a minute and decrease with continued use.	This is expected and is normal for all IPL treatments. You can keep on using the device as instructed.
Itchiness in the treatment area.	This is quite common for IPL treatments, and should subside after a short period. You can keep on using the device as instructed. Do not scratch the area.
Skin redness during or after treatment which disappears within minutes.	This is expected and is normal for all IPL treatments. You can keep on using the device as instructed once skin redness has disappeared.
Skin redness which does not disappear within minutes and lasts 24-48 hours.	Stop using the device immediately and consult your physician before using it again.
Pain or discomfort that is intense during treatment or persists after a treatment.	Stop using the device immediately and consult your physician before using it again.

IN VERY RARE CASES	HOW TO ASSESS AND REACT
Swelling and redness that does not disappear within two to three days.	<p>Stop using the device immediately and consult your physician before using it again.</p> <p>Please contact the SMOOTHSKIN Helpline.</p>
Temporary changes in skin colour (lightening or darkening).	<p>If your skin colour changes, stop using the device immediately and consult your physician.</p> <p>Please contact the SMOOTHSKIN Helpline.</p>
Blistering or burning of the skin.	<p>Stop using the device immediately and consult your physician before using it again. Apply a cold pack to the area. Treat with antiseptic or burn cream.</p> <p>Please contact the SMOOTHSKIN Helpline.</p>

5.3 CLEANING, MAINTENANCE AND STORAGE

1. After treatment, always switch off SMOOTHSKIN BARE by unplugging from the electrical outlet.
2. After use, the Handset, should be inspected for damage and wiped down with a dry, lint free cloth.

WARNING: The glass filter can get hot during use. **DO NOT** touch or clean the filter for at least 5 minutes after use to allow it to cool down.

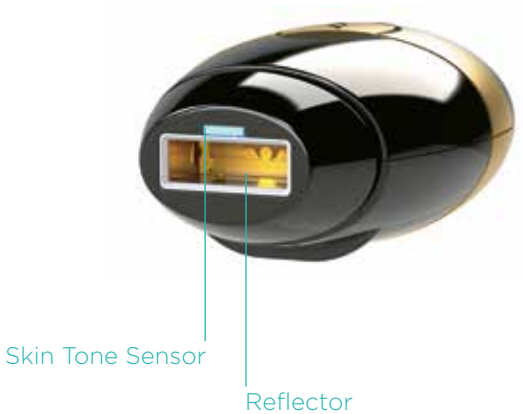
NEVER use water or other cleaning fluids, as these can damage the device and cause a safety hazard.

To ensure maximum performance of your SMOOTHSKIN BARE, it is particularly important to keep the reflector and skin tone sensor free from dirt, hair or other debris.

If necessary, the reflector and skin tone sensor can be carefully cleaned by using a slightly damp cotton bud.

3. Store SMOOTHSKIN BARE in a cool, dry place. Make sure that the treatment window and skin tone sensor on the handset are protected from damage.

4. Regularly check the device (including cords) for visible signs of damage. In case of damage or cracks, stop using the device - and call the SMOOTHSKIN Helpline on **+44 (0) 844 800 1156**.



5.4 TROUBLESHOOTING

PROBLEM	SOLUTION
The Activation Button Lights on the handset do not light up when placed against your skin.	Make sure the power supply is plugged in. Ensure the Skin Tone Sensor is fully pressed against the skin. Your skin could be too dark for treatment. Check against the skin tone chart in the front of this user guide.
The Activation Button on the handset lights up white when placed on the skin, but the handset fails to flash when the Activation button is pressed.	There could be a fault with the device. Unplug the device and restart. If the problem persists, contact the SMOOTHSKIN Helpline.
The Activation Button Lights on the handset are illuminated red continuously, and the device will not function.	This indicates that there is a fault with the device. Stop using the device and contact the SMOOTHSKIN Helpline.
The SMOOTHSKIN handset, treatment window, power supply or cable are damaged, broken, cracked or appear defective.	DO NOT USE. If you are in any doubt about the safety of SMOOTHSKIN BARE or suspect it is damaged in any way, it must not be used, and you should contact the SMOOTHSKIN Helpline.

6.0

INFORMATION

6.1 TECHNICAL SPECIFICATIONS

SMOOTHSKIN BARE is a filtered broadband Intense Pulsed Light system with the following technical specifications:

- Repetition Rate: Manually pulsed every 0.6 seconds
- Continuous Operation
- Max Optical Output: 3J/cm²
- Pulse Length: 1msec FWHM
- Power Line Input: 100-240V~, 50/60Hz, 1.3-0.55A
- Operating Temperature: Between 5°C and 40°C
- Operating Humidity: Up to 93%R.H. non condensing
- Operating Pressures: 700hPa to 1060hPa
- Treatment Area (spot size): 3 cm² (30mm x 10mm)

Transport Conditions:

- Temperature: -25°C to +70°C
- Humidity: Up to 93%R.H. non condensing
- Pressures: 500hPa to 1060hPa

SMOOTHSKIN BARE has unlimited flashes and is intended for a single user.

CE marking certifies that this appliance conforms to the following EEC directives:

- Low Voltage Directive 2014/35/EU
- Electromagnetic Compatibility Directive 2014/30/EU
- Energy related Product Directive 2009 / 125 / EC.

6.2 DISPOSAL (end of life)

In order to minimise hazards to health and the environment and ensure that materials can be recycled, this product should be disposed of at a separate collection facility for waste electrical and electronic equipment. The Wheelie Bin symbol marked on the product is there to remind you.

6.3 WARRANTY

We grant a 2 year warranty on the product starting on the date of purchase. Within the warranty period, we will check faults in materials or workmanship free of charge and replace the complete device, at our discretion.

This warranty extends to every country where this device is supplied by Cyden Ltd or its appointed distributor.

This warranty does not cover damage due to

improper use, normal wear or use as well as defects that have a negligible effect on the value or operation of the appliance. The warranty becomes void if repairs are undertaken by unauthorised persons and if original SMOOTHSKIN BARE parts are not used. To obtain service within the warranty period, please visit our website:

www.smoothskin.com/support